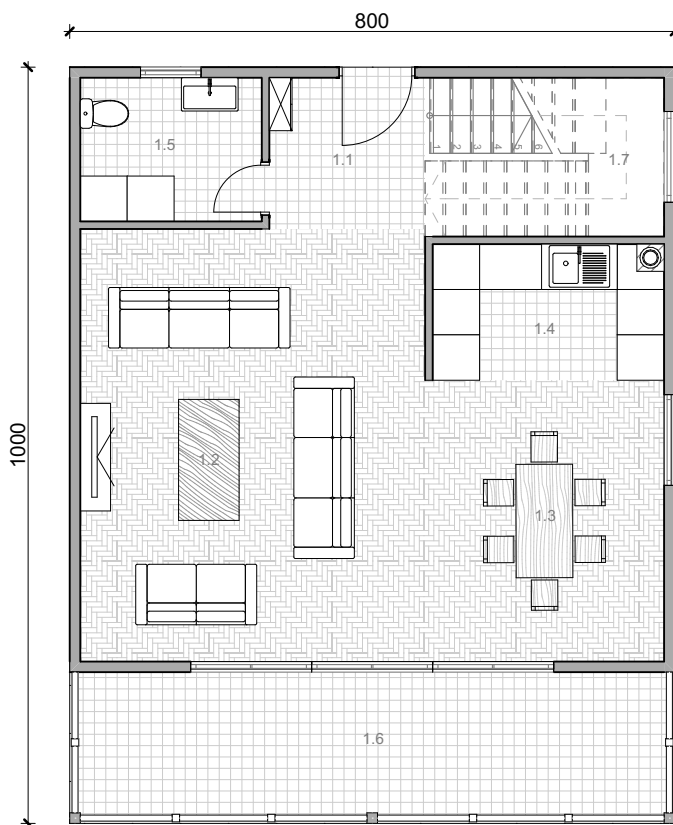
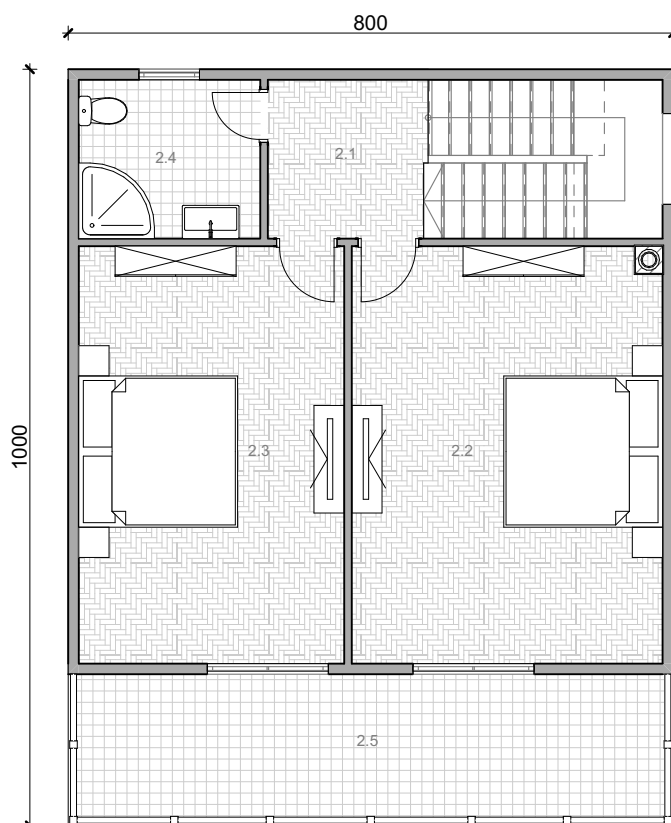


# VIKENDICA 2

## osnova prizemlja



## osnova sprata



BR. PR.	PROSTORIJA	POVRŠINA
1.1	HODNIK	4.33 m <sup>2</sup>
1.2	DNEVNI BORAVAK	26.08 m <sup>2</sup>
1.3	TRPEZARIJA	11.75 m <sup>2</sup>
1.4	KUHINJA	5.37 m <sup>2</sup>
1.5	KUPATILO	4.56 m <sup>2</sup>
1.6	TERASA	14.69 m <sup>2</sup>
1.7	STEPENIŠTE	6.63 m <sup>2</sup>
2.1	HODNIK	4.55 m <sup>2</sup>
2.2	SOBA	22.68 m <sup>2</sup>
2.3	SOBA	19.37 m <sup>2</sup>
2.4	KUPATILO	5.04 m <sup>2</sup>
2.5	BALKON	14.69 m <sup>2</sup>
UKUPNA NETO POVRŠINA		139.74 m <sup>2</sup>

